



# Great Maximum Value

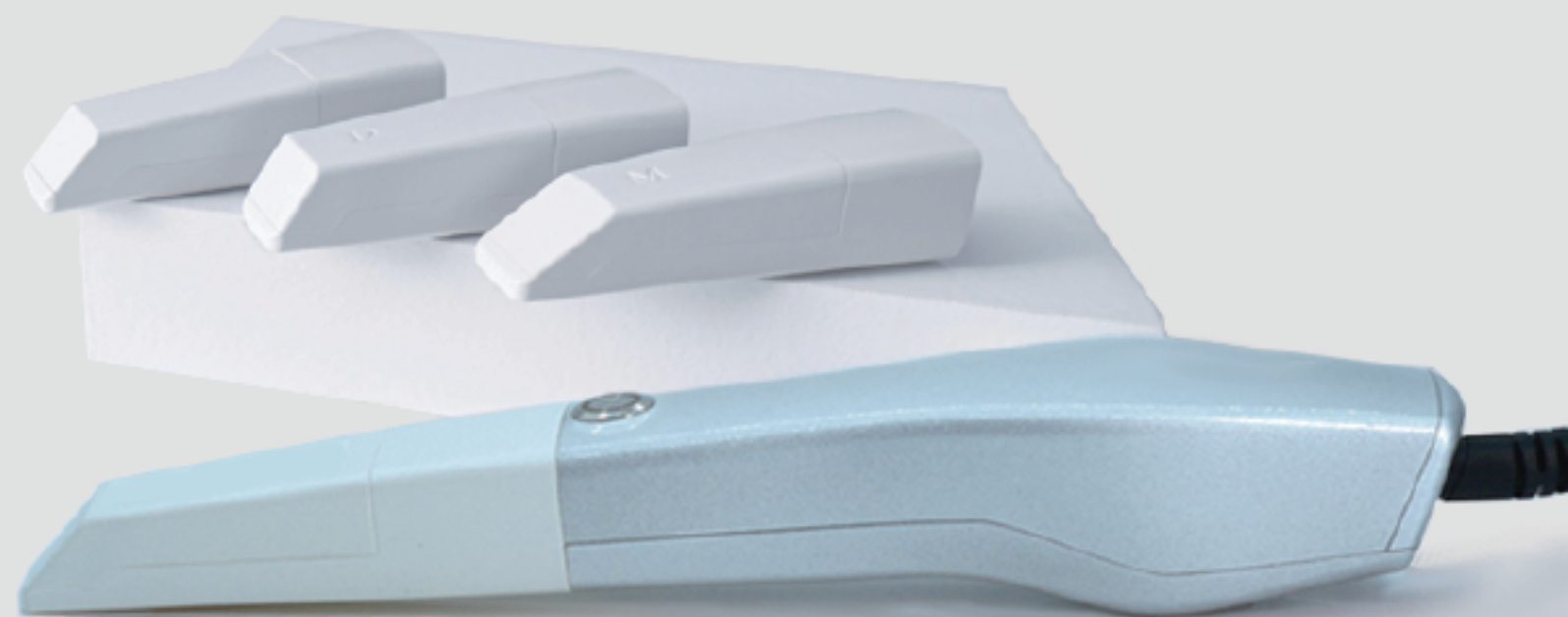
For Every User



ADD: Room 15, Floor 8, Building 7, No.289  
Xisanhuan Road, High-tech Zone,  
Zhengzhou, Henan

Web: <https://wukongdent.com/>

E-mail: [business@ypdental.com](mailto:business@ypdental.com)



# NEW DESIGN

## Button control

The tiny button carries great responsibilities.  
The button controls the entire digital workflow.  
It prevents the cross contamination by without touching the screen or clicking the mouse.  
Safety is always the priority

## Motion sensing

The gyroscope inside the scanner allows to see different angle of scanned images by just simply rotating the scanner. So you do not have to touch the screen to see the image.

# Parameters

Overall Size	216 x 40 x 36 mm
Tips End	19.6 x 14.6 mm Autoclavable
Field of View	18 x 16 mm
Depth of Field	20 mm
Patents	40+
Certificates	CFDA/CE/ISO13485/FDA/INMETRO/ANVISA, etc.
Interface USB	3.0
Data Output	STL PLY PTY *encrypted data available

1

1 min  
Full Arch Scanning

3

3 tips  
with Different Angles

228

228 g  
Aviation Aluminum Alloy

10

10µm  
More Accurate



PRODUCT INFORMATION

Technology	Staring Scanning with Coded Structured Light
Camera Number	x 3
Scan Field	18x16mm
Scan Depth	15mm
Accuracy	≤15μm
Repeatability Precision	≤10μm
Color	Full HD
Anti Fog System	Intelligent Heating
Full Jaw Scanning Time	1 min
True Color	Yes
Handpiece Enclosure	Aviation Aluminum Alloy
Handpiece Dimension	216 x 40 x 36 mm
Handpiece Weight	228g
Tip Types	3 types (N/M/D) High Temperature Disinfection
Number of Tips included	5
Autoclave Cycle for Tips	20 times
Calibrator	Automatic
Scanning Control	Button
Image Transfer Interface	USB3.0
Cable Length (m)	2m
Power Supply Type	AC/DC Medical Power Adapter
Supply Voltage (V)	100-240V/50-60Hz
Supply Current (A)	0.7-1.5A
Storage Temperature (°C)	-10°C- 55°C

AFTERSALES

Standard Warranty	1 year
Extended Warranty	2-3 years available

SOFTWARE

Types of Scanning	Orthodontics, Implant, Restoration
Image Store	Yes
3D Data Preview	Yes
Output Files	STL, PLY, PTY (encrypted for user)
Cloud Service	Yes
Cloud Service Price	5GB/free
Direct Compatibility with Dental CAD	Exocad*
Main Image Processing Tools	Trim/Edit/Recover/Lock, etc.
Margin Line Drawing	Yes
Occlusal Match	Yes
Undercut	Yes
Data Comparison	Yes
AI Technology	Auto Tissue Remove, Overlap Correct, etc.
Software License	Free
Software Upgrade	Free
Data directly to other platforms with API	Available

PC REQUIREMENTS

CPU	Intel i7-8700(3.2GHz) and above
RAM	DDR2400 16G and above
Hard disk	Solid state drive 120G and above
Graphics card	NVIDIA GTX1060 (6G) and above
Computer operating System	Windows10*64 bit
Display	Resolution 1920×1080 and above





# Features

## Product Features

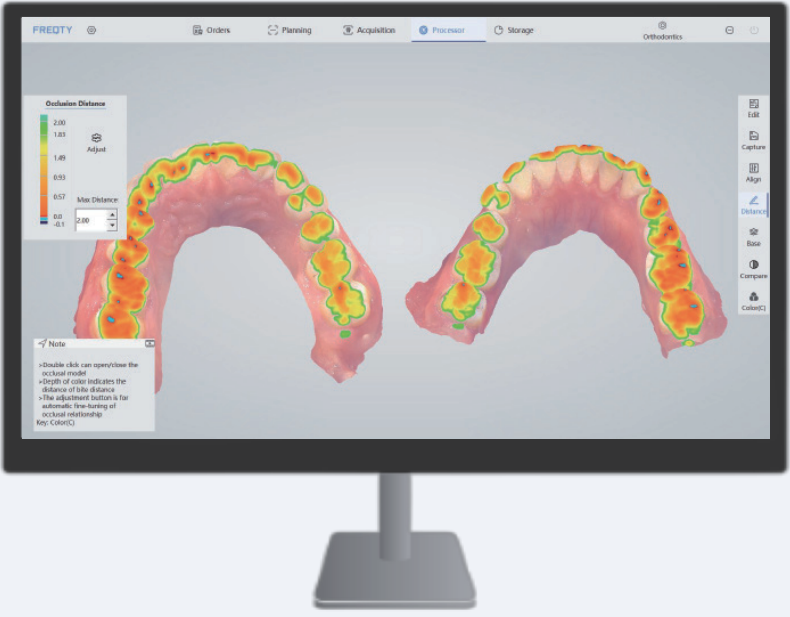
- AI Technology, much smarter, improve a lot of scanning experience
- 3 Different tips, meet more demands of different applications
- Much smaller, very easy to operate
- Clear margin line, full HD color, high accuracy
- Fast scanning speed, easy to learn and use
- Powder-free and true color scan

## Application Features

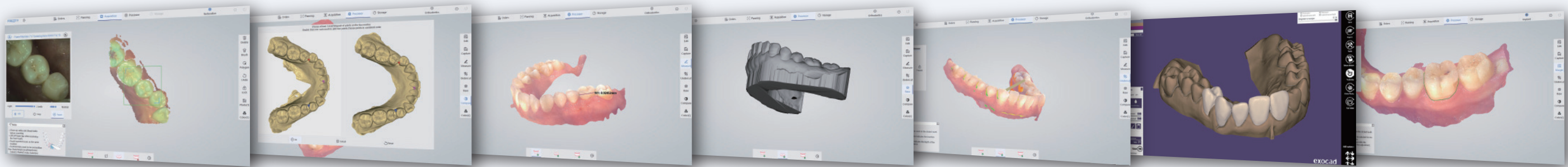
- High resolution and true image**  
Reproduce the real state of teeth  
Accurate anatomical features  
3D high-definition color, visual communication  
Easy and exciting treatment experience
- Various range of software**  
Clear and easy Margin Line drawing  
Pre-op Scan available for Implant and restoration  
Comparison of two sets of data such as denture and full arch  
Enhanced scanning option for Veneer
- Case selection and finalized report**  
Auto Preparing the case report to the labs  
Various options to select in reports such as Bridge or Crown  
Convenient tools for clinics and laboratories
- Multiple platforms to access the case**  
3D preview allows to be accessed via the phone  
Share the cases to patients immediately after scanning  
Fully prepared case reports to the labs  
One click link directs to EXOCAD
- Revolutionary Improvement \***  
Scanning speed improve 70%  
Handpiece weight decreases 10%  
Data accuracy improves 30%  
Height of tips decreases 14%







**Bite Check**



2D Image Store

Cases Comparison

Teeth Measurement

Base Adding

Undercut

Direct Export into Exocad\*

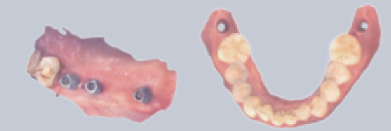
Margin Line Drawing

# Applications



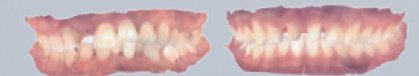
## Restoration

Accurate and clear shoulder margin brings efficient design, and high-definition color images help dentists effectively distinguish between gingiva and teeth. One visit, immediate restoration.



## Implant

Fast scanning with a large field of view, easily capture 3mm data of cuff, and accurately scan of metal path pin. No need to do repeat impression and improve patient treatment experience.



## Orthodontics

High accuracy of the full dentition, restore the real state of full arch. Get orthodontic treatment quickly, and save time for more patients.

